

# Bethany Beacon

## Special Interest Articles:

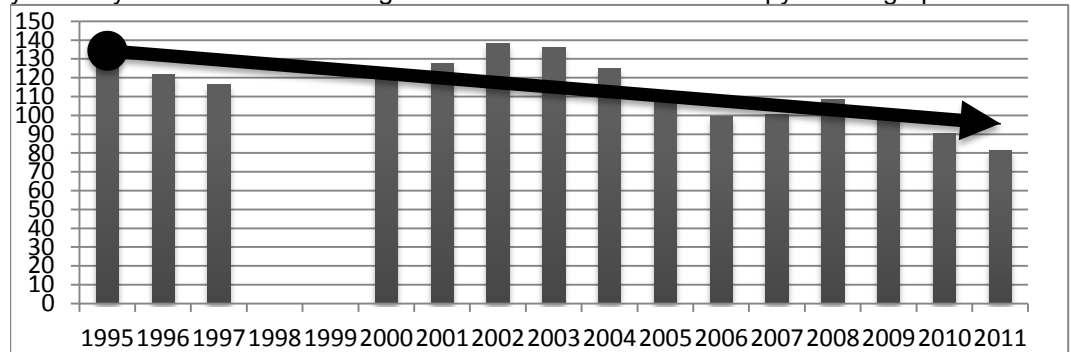
- Financial Peace University Returns!
- Mission Update

## Individual Highlights:

- Kids Korner 2  
Church updates 3  
Calendar 5

## E-Mail – Setting the Trend *By Pastor Eric*

At our congregational meeting I showed a graph of Bethany's attendance for the last 17 years. If you missed the meeting or need a refresher here's a copy of that graph:



The purpose of sharing this information is for us to see a trend that has existed at Bethany for several years, even a few decades. I don't want you to look at this graph and feel like there is no future for Bethany. I do want you to look at this graph and realize that with this knowledge, we can all join together to reverse the trend.

You may be asking, what can Bethany do? First, we've already done a lot! We have been right-sizing a lot of our committees in order to keep from overburdening ourselves with *bureaucracy*. We all know that nobody is going to attend Bethany just because we've made some changes to how we organize ourselves. But at the same time, instead of using our time trying to fill empty seats on committees, we can use that time to reach out to others in our communities. Second, we've made excellent progress on getting ourselves out of debt. Barring any extreme circumstances, we should be debt free in less than 7 years.

*This means that the money that continues to come in can be put toward building new ministries. Third, we've developed a list of negotiables and non-negotiables for the church. (These can be seen in the office or at [www.bethpc.org](http://www.bethpc.org).) We've done this to protect and safeguard our values. In other words, we can move forward with new ideas and ministries without the fear of sacrificing our values. Fourth, we've developed a mission: To equip people to be fully devoted to Jesus Christ through relevant and practical ministries. This mission allows us to focus in what we should be working on to make better use of our time and resources.*

*My promise to you is to do my best to help our church grow: in ministry, numbers, depth, and how it impacts the word. I cannot do anything less as your pastor. And I can't do it without you.*

*Together we will reverse the trend. We can do it by telling people about the great*

*things taking place at Bethany and by inviting a friend. And most of all, pray, pray, pray. No ministry grows without prayer.*

We are nearing the end of our sermon series in Acts. Acts is the story of the birth and development of the Church. The Early Church faced opposition and challenges. But they also had the Holy Spirit and an overwhelming desire to change the world. If it were not for the challenges ahead of them, the first Christians may never have joined together to change the world.

Bethany is entering into its own period of Acts. It is time for us to be reborn as a new Church, filled with the Holy Spirit. Let us learn from the Christians before us and work together and use the challenges the world brings to unite us together for the purpose of creating an outpost of God's kingdom in order to transform the world and glorify Him.

*Blessings, Pastor Eric*

# Kids Korner – Yes, Jesus Loves Me

Submitted by Joan Keener

Written by Joan and her granddaughter, Ciarra Span

“Jesus Loves Me’ is a song that perhaps all of you have sung. It was written by Anna B. Warner in 1860. Anna was a gifted writer. In one of her stories, she wrote about a dying child. She wrote the poem “Jesus Loves Me” and put it in her story as a comfort to this child. Shortly after this, the poem was set to music by William B. Bradbury. Since then it has been sung by children and adults all around the world.

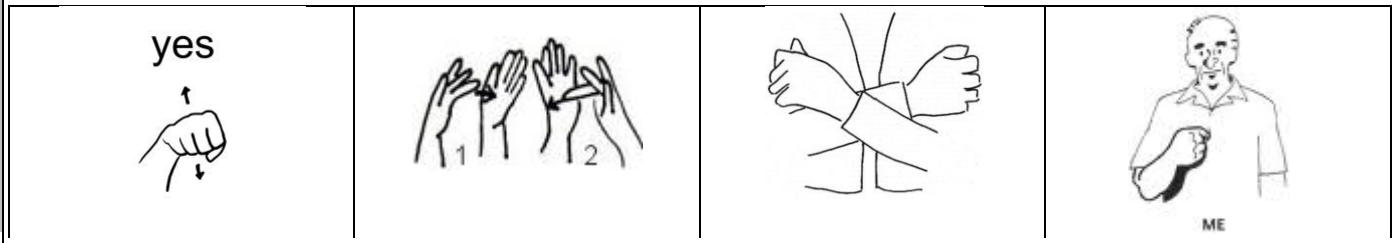
Do any of you have a deaf friend or relative? How about Learning “Yes, Jesus Love Me” in sign language and signing it for them? Here is a way to make the signs.

**YES:** Bend your forearm up from your elbow with the palm facing out. Make a fist. Move your fist up and down.

**JESUS:** Hold your arms out from your elbows with the palms facing up. Use the middle finger of your right hand to touch the palm of your left hand for “Je-.” Use your left middle finger to touch your right palm for “-sus.” In essence, you are pointing to Jesus’ nail-pierced hands.

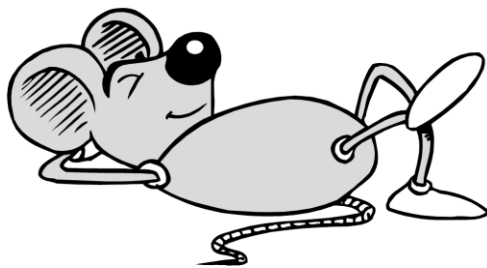
**LOVES:** Using your arms, make an “X” across your chest – like a self hug.

**ME:** Point your index finger to yourself. Practice a few times and then sign these precious words to your deaf friend or relative.



Deacon Church Mouse sez;  
When God measures men, He puts the  
tape around the heart, not the head.

Granny Church Mouse sez:  
Love, not time, heals all wounds.



## Momints: Moderator Minutes:

By Pastor Eric

At our recent session meeting the final motions were approved:

- 2012 Budget as presented by Kathy Panozzo on behalf of the Budget and Stewardship Committee (Budget can be seen by contacting the office)
- Use of the sanctuary was approved for a piano recital
- The purchase of a new copy machine for the office to replace the one that broke down
- We changed Mat's title from Custodian to Facilities Manager

The session also discussed the termite situation in the lower part of the education wing. Because termite activity slows down during the winter, we will work to address this by the spring.

## Women's Association Update

Submitted by Marlys Marsh

On Sunday, January 8<sup>th</sup>, the Women's Association held the 1<sup>st</sup> of 3 luncheons in the fellowship hall immediately after church. We had an absolute blast. Thank you so much, Bethany, for coming through with your support and the fellowship that ensued. I would like to keep you all in the financial loop, as well. When I came downstairs after Eric's sermon, I was so stunned to see the line that snaked through and around the tables that I forgot to count you. So, I have to use another method. We purchased 56 buns and when I checked the table there was only one bun left. I auctioned it off for \$2.00. Wally bought it and donated it to Eric. Anyway, that means there were 55 sandwiches consumed (unless you count the last one). So, we had approximately 55 "consumers". We received \$325.00 in our love offering and had expenses of \$124.65, which left us with a profit of \$200.35 to put towards our missions.

We humbly thank you all for participating and enjoying the luncheon and the fellowship and the many comments so many of you gave in support of this project. BUT, we're not done yet. On February 12<sup>th</sup> we will have our 2<sup>nd</sup> luncheon. I hope even more of you will partake of the food and the fellowship. I know I am stressing "fellowship" a lot in this note, but that was what I noticed the most. How all of you enjoyed each other and the sound of happy voices coming from our fellowship hall was definitely music to God's ears. I know those happy sounds pleased our Lord to see his people communing together in fellowship in His Name.

In His Service,  
Kathy Metcalf and Marilyn Buske (co-chairmen) and  
Marlys Marsh (Program Chair)

## Mission Update

Submitted by Ginny Falnes

### PAPER ANGEL CLOSET

The Deacons served and prayed with 4 groups on Monday, Jan. 16. Please pray for those we serve. Their needs are critical and many. Items most needed to be replenished: dishwashing liquid, shampoo, toothbrushes, laundry detergent, bleach, and chapstick. God bless you for your continued support.  
Deacons Committee

### SUNDAY SCHOOL MISSION

Cheryl Eickman's 1st, 2nd and 3rd graders have been bringing canned goods and staple items for St. Bridget's Food Pantry! God works through our children in wonderful ways! Their items will help fill the food pantry box in the entry way of the educational unit. God bless these young people for sharing and caring!

MISSION OF THE MONTH FOR FEBRUARY is Love INC. There will be further information each week in our bulletins

## FINANCIAL PEACE IS RETURNING

By Pastor Eric

We are excited to announce that another class in Financial Peace University is being presented at Bethany. If you think you are too old or too young to benefit from this class consider the following statements:

- I have no debt at all
- I own the title to my house
- I no longer have a car payment
- I can live off my retirement with no fear of it running out
- I am able pay for college without taking out a loan (my own degree or my child's)
- My will is ready
- I know the difference between whole life and term life insurance
- I know what a ROTH IRA is vs. a traditional IRA
- I plan on giving more to the church this year
- I am at complete peace with my finances

If you can't agree with all of these statements, then FPU is for you. The simple lessons taught in this class can change your life. It has for me and thousands of others! I encourage you to talk to Debbie or Jay DuFoe or call the church if you are interested in attending. The cost is \$99.50 for a kit and a lifetime membership. The 13-week course begins Wednesday night, February 29<sup>th</sup>.

## Kids Say the Darndest Things About the Bible

A Christian should have only one spouse. This is called monotony.

Lot's wife was a pillar of salt by day, but a ball of fire by night.

Noah's wife was called Joan of Ark.

The seventh commandment is thou shalt not admit adultery.

Solomon, one of David's sons, had 300 wives, and 700 porcupines.

Moses died before he ever reached Texas.

Then Joshua led the Hebrews in the battle of Geritol.

Moses led the Hebrews to the Red Sea, where they made unleavened bread, which is bread without any ingredients.

The greatest miracle in the Bible is when Joshua told his son to stand still and he obeyed him.

Jesus enunciated the Golden Rule, which says to do one to others before they do one to you.

Jesus was born because Mary had an immaculate contraption.

The first commandment was when Eve told Adam to eat the apple.

David was a Hebrew king skilled at playing the liar. He fought with the Finklesteins, a race of people who lived in Biblical times.

Adam and Eve were created from an apple tree

## What Is Ash Wednesday?

In Western Christianity, Ash Wednesday marks the first day, or the start of the season of Lent, which begins 40 days prior to Easter (Sundays are not included in the count).

Lent is a time when many Christians prepare for Easter by observing a period of fasting, repentance, moderation and spiritual discipline. During some Ash Wednesday services, the minister will lightly rub the sign of the cross with ashes onto the foreheads of worshipers.

Not all Christian churches observe Ash Wednesday or Lent. They are mostly observed by the Lutheran, Methodist, Presbyterian and Anglican denominations, and also by Roman Catholics. Eastern Orthodox churches observe Lent or Great Lent, during the 6 weeks or 40 days preceding Palm Sunday with fasting continuing during the Holy Week of Easter. Lent for Eastern Orthodox churches begins on Monday and Ash Wednesday is not observed.

The Bible does not mention Ash Wednesday or the custom of Lent, however, the practice of repentance and mourning in ashes is found in 2 Samuel 13:19; Esther 4:1; Job 2:8; Daniel 9:3; and Matthew 11:21.



## February Calendar

Sun	Mon	Tue	Wed	Thu	Fri	Sat
			<b>1 Session Reports Due</b> 5:30pm: Bethany night of prayer 6:30pm: Praise team 7:30pm: Chancel choir	<b>2</b> Groundhog Day	<b>3</b>	<b>4</b>
<b>5</b> 9:00am: Sunday School 10:15am: Worship Celebration with Communion 11:30am: Fellowship	<b>6</b> 6:30pm: Building & grounds committee	<b>7</b>	<b>8</b> 6:30pm: Praise team 7:30pm: Chancel choir	<b>9</b>	<b>10</b>	<b>11</b>
<b>12</b> Lincoln's Birthday 9:00am: Sunday School 10:15am: Worship Celebration 11:30am: Winter Warmth lunch	<b>13</b> 7pm: Session	<b>14</b> Valentines Day 7pm: Uriel circle	<b>15 Beacon articles due</b> 12:30pm Hannah circle 6:30pm: Praise team 7:30pm: Chancel choir	<b>16</b> 9am: BYKOTA 7pm: M&M circle	<b>17</b>	<b>18</b>
<b>19</b> 9:00am: Sunday School 10:15am: Worship Celebration 11:30am: Fellowship	<b>20</b> President's Day 7pm: Deacons Meeting	<b>21</b>	<b>22</b> Ash Wednesday 6:30pm: Praise team 7:30pm: Chancel choir	<b>23</b> 6pm: Parents Prayer group	<b>24</b>	<b>25</b>
<b>26</b> 9:00am: Sunday School 10:15am: Worship Celebration 11:30am: Fellowship	<b>27</b> 7pm: Christian Ed	<b>28</b>	<b>29</b> Financial Peace University Starts 6:30pm: Praise team 7:30pm: Chancel choir			

### Winter Address Update!

The weather has been beautiful since our arrival. 74 yesterday and 72 today. Here in North Florida, it's usually in the 50's or 60's until February. Our condo is right on the beach, so we sit on the porch and watch the sunset over the gulf every evening. Our address is 10517 Front Beach Road, Panama City Beach, FL, and the phone is 850-236-2369. The Lord bless you, Peder and Jan.



**BETHANY PRESBYTERIAN**

5403 N 2<sup>nd</sup> Street  
Loves Park, IL 61111

**RETURN SERVICE REQUESTED**

Non-Profit  
Organization  
U.S. Postage  
PAID  
Permit #3791  
Rockford, IL

5403 N 2<sup>nd</sup> Street  
Loves Park, IL 61111

PHONE:  
(815) 877-8001

FAX:  
(815) 877-8002



**We're on the Web!**

*See us at:*

[www.bethpc.org](http://www.bethpc.org)

**Staff Directory**

Eric Keller, Senior Pastor  
Julie Peet, Office Administrator  
Peder Carlson, Pastor Emeritus  
Marlys Marsh, Pianist  
Tim Krug, Worship Director  
Jack Hoffman, Chime Choir Director  
Matt Spencer, Facilities Manager

ekeller@bethpc.org  
jpeet@bethpc.org

mar4806@comcast.net  
tndkrug@aol.com